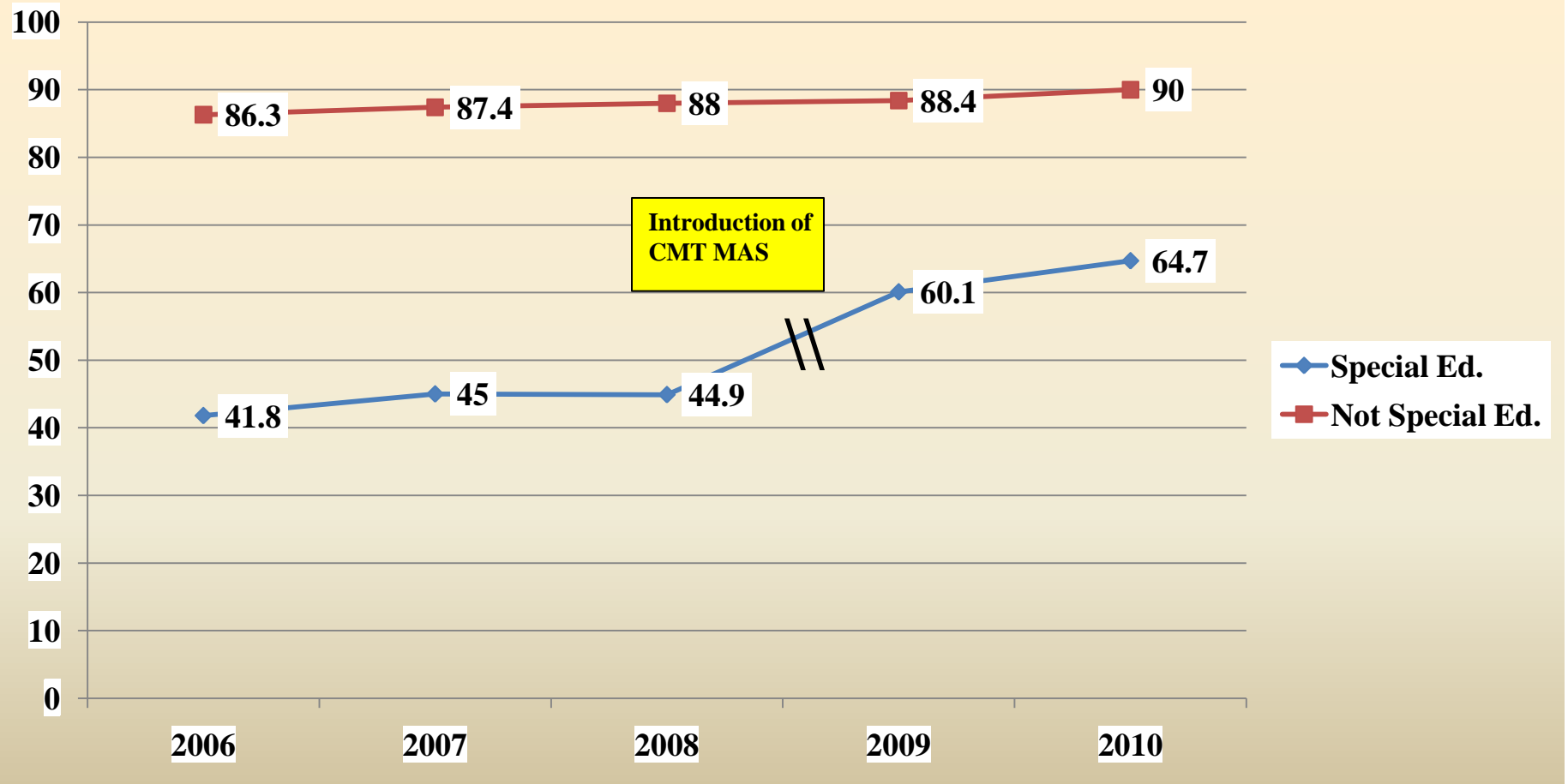


CAPELL CMT and CAPT Accommodations

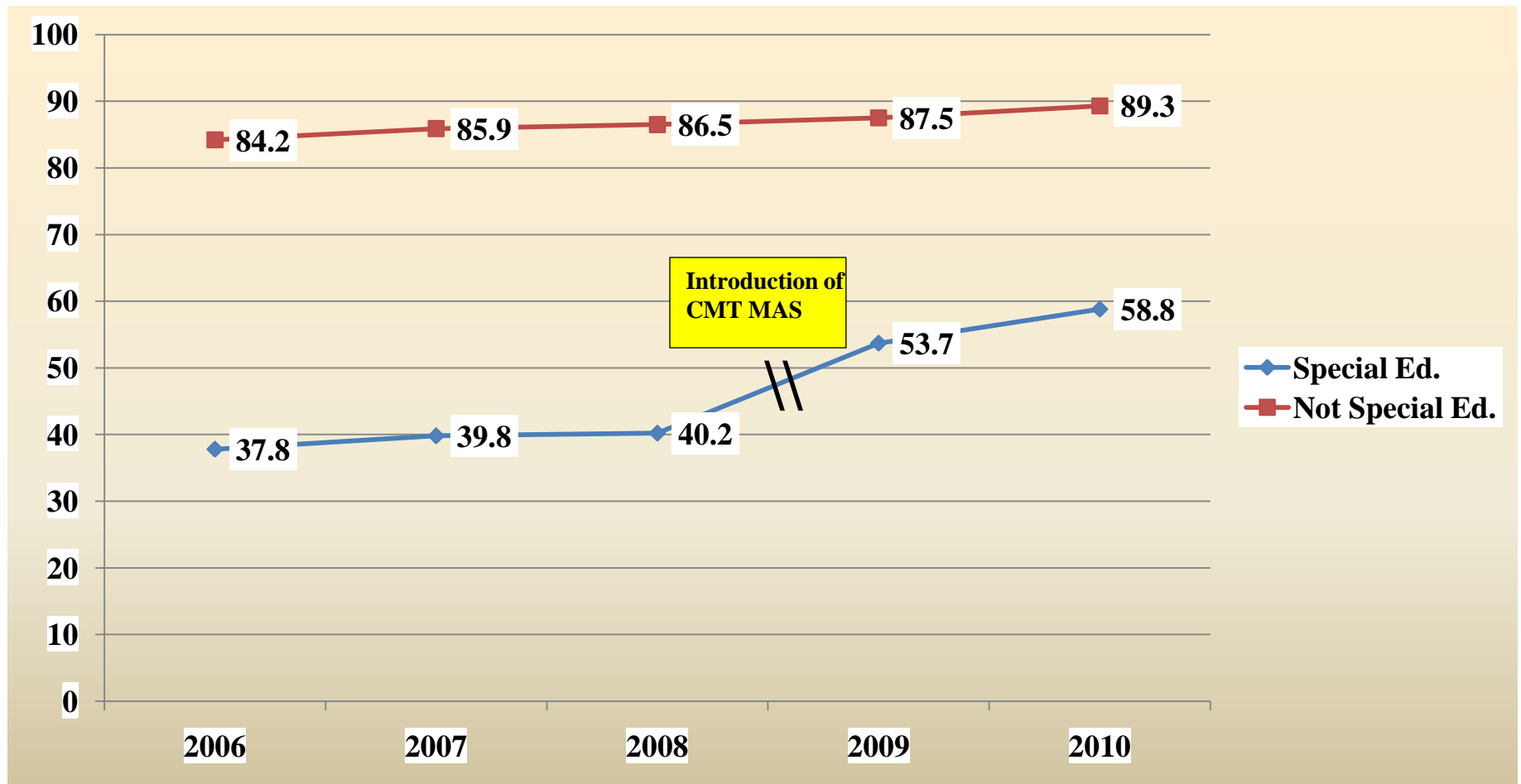
December 3, 2010

Janet Stuck

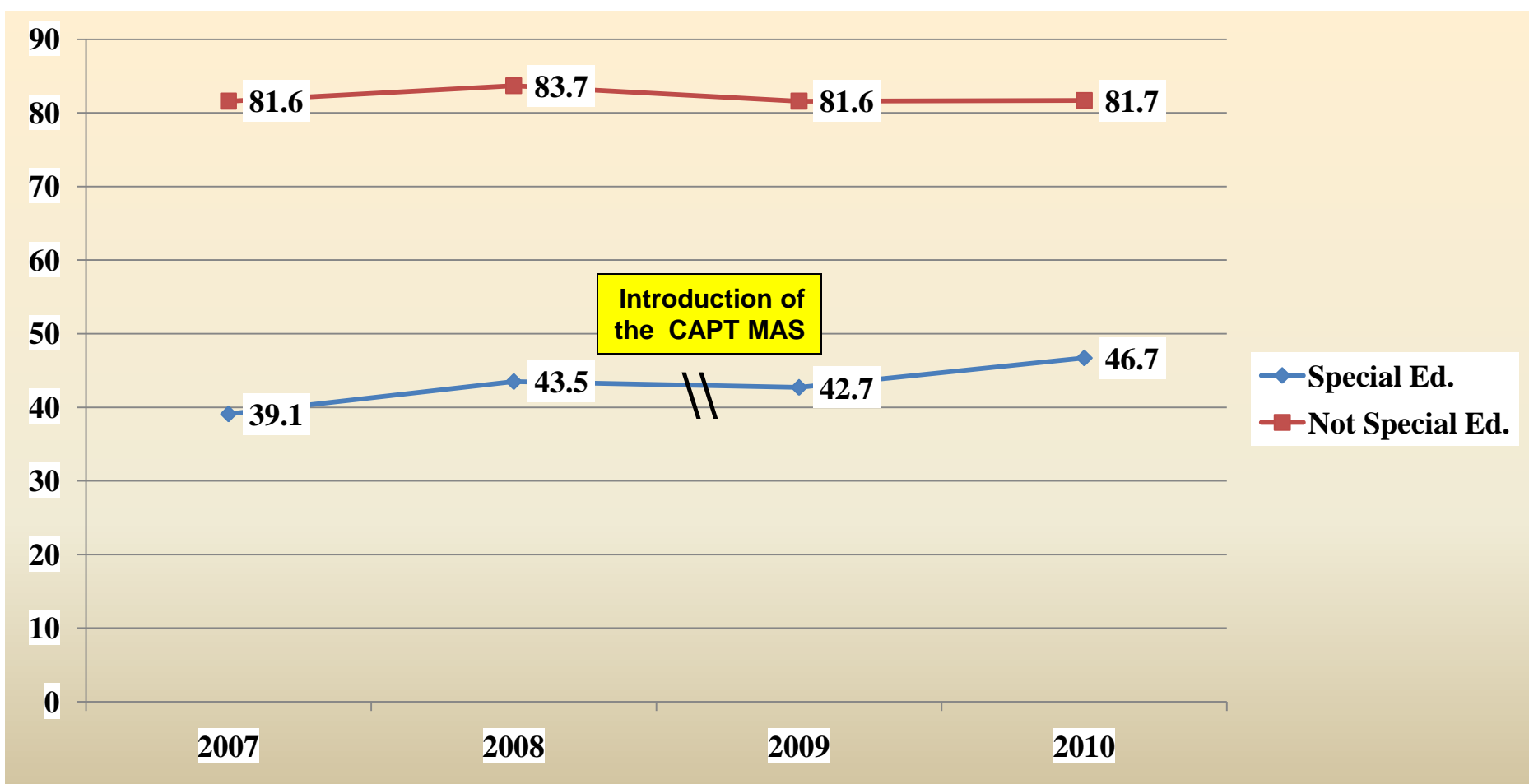
CMT Mathematics: Grade 5 Special Education Percent At or Above Proficient



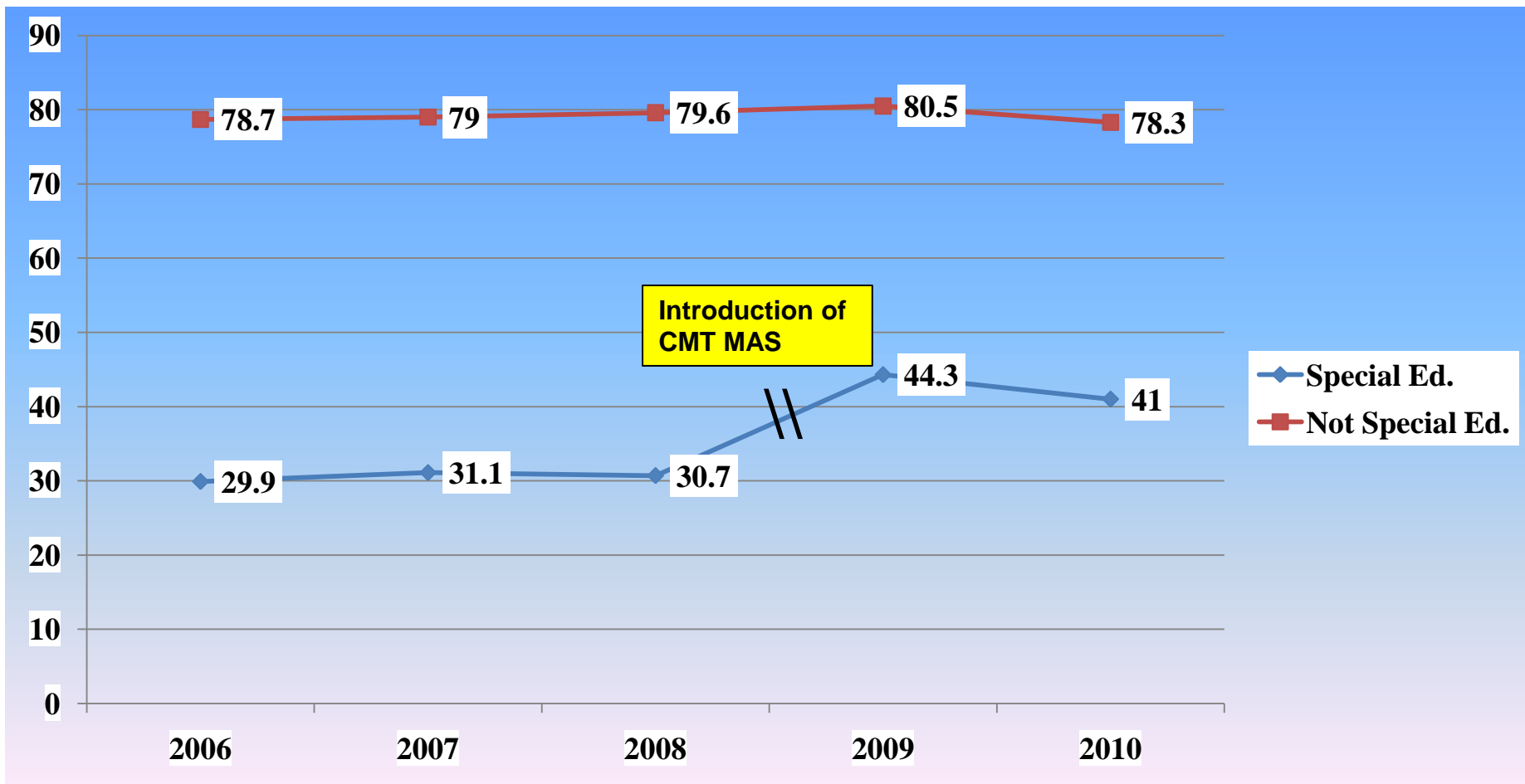
CMT Mathematics: Grade 8 Special Education Percent At or Above Proficient



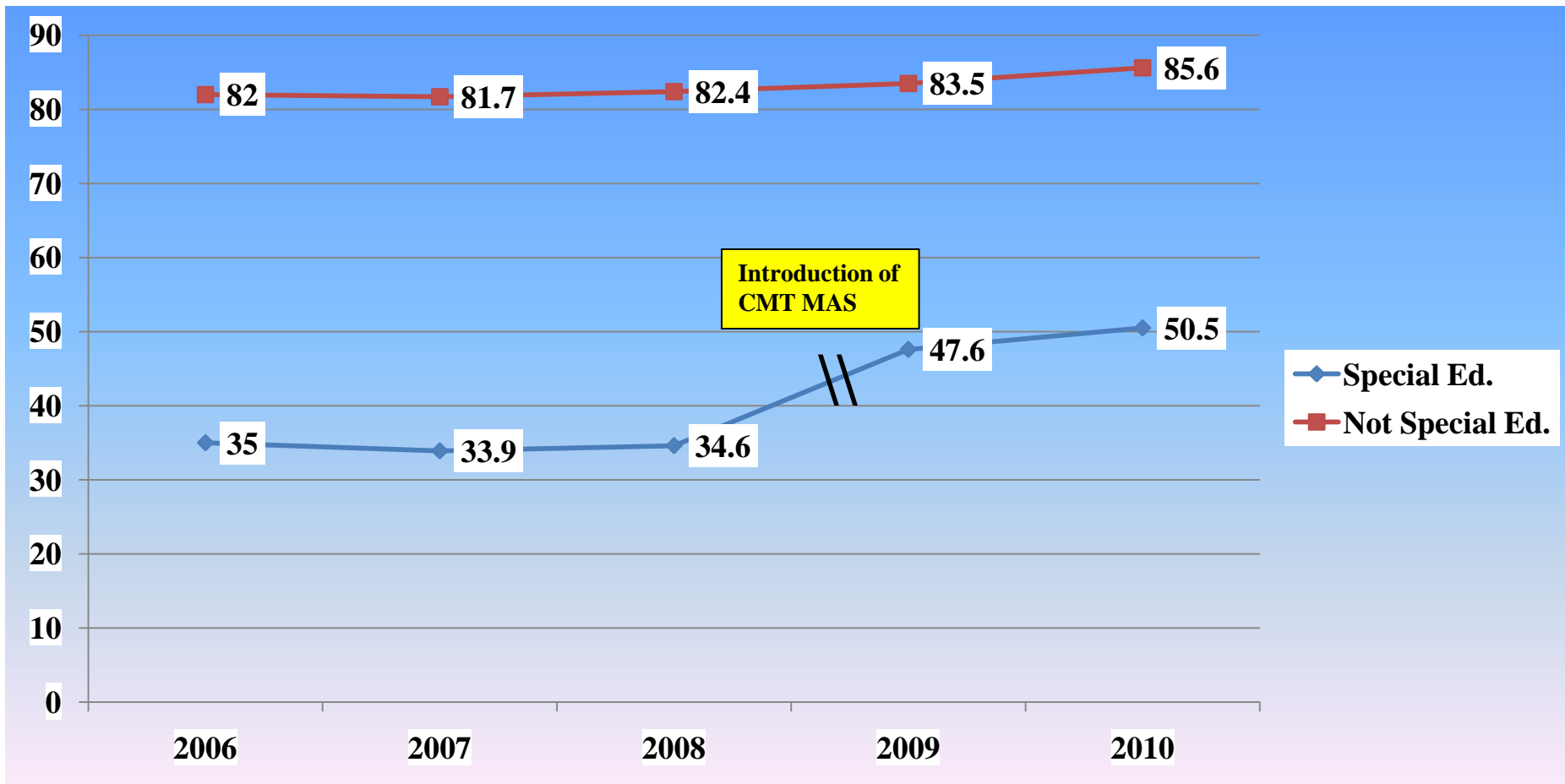
CAPT Mathematics: Grade 10 Special Education Percent At or Above Proficient



CMT Reading: Grade 5 Special Education Percent At or Above Proficient

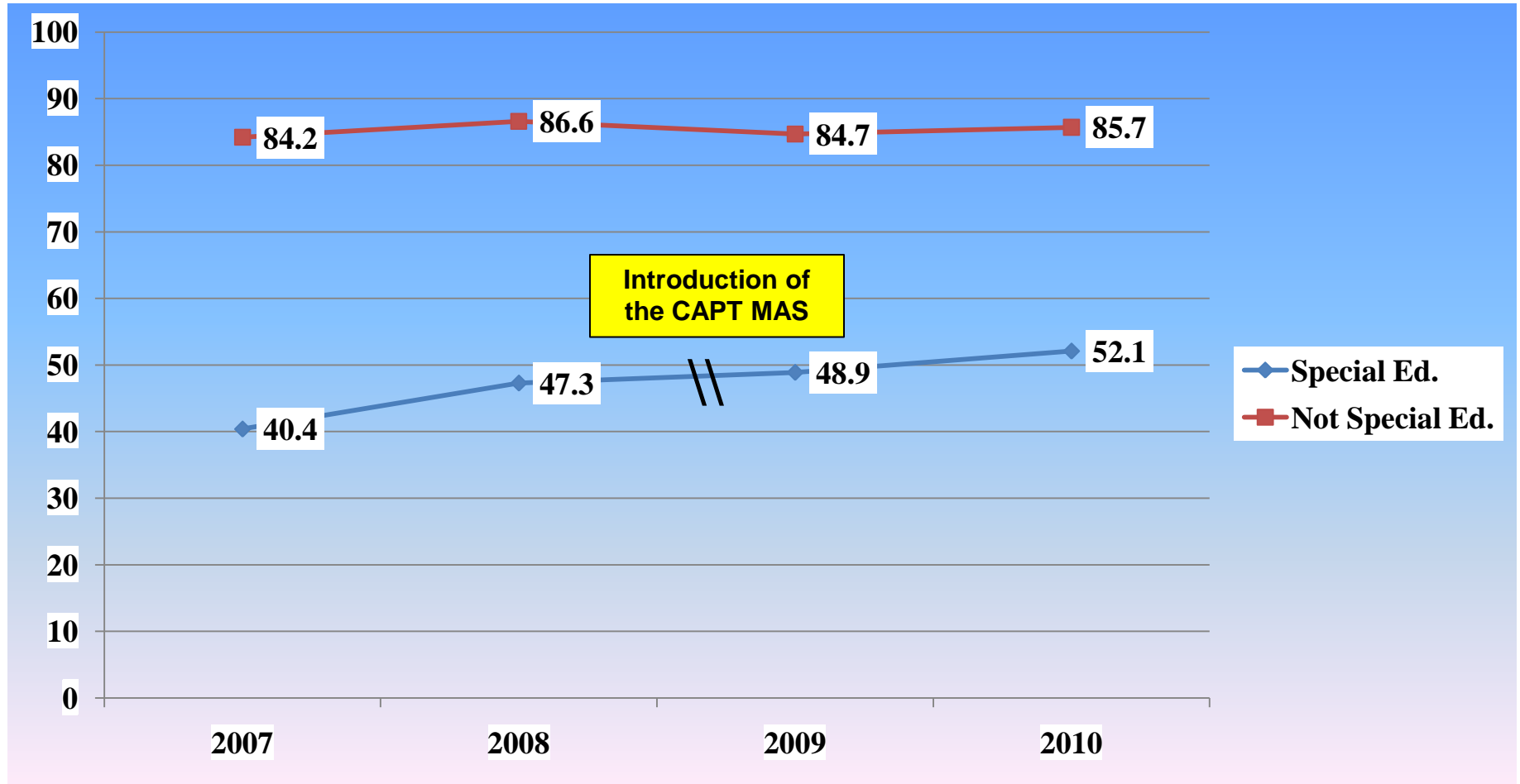


CMT Reading: Grade 8 Special Education Percent At or Above Proficient



Connecticut SDE

CAPT Reading: Grade 10 Special Education Percent At or Above Proficient

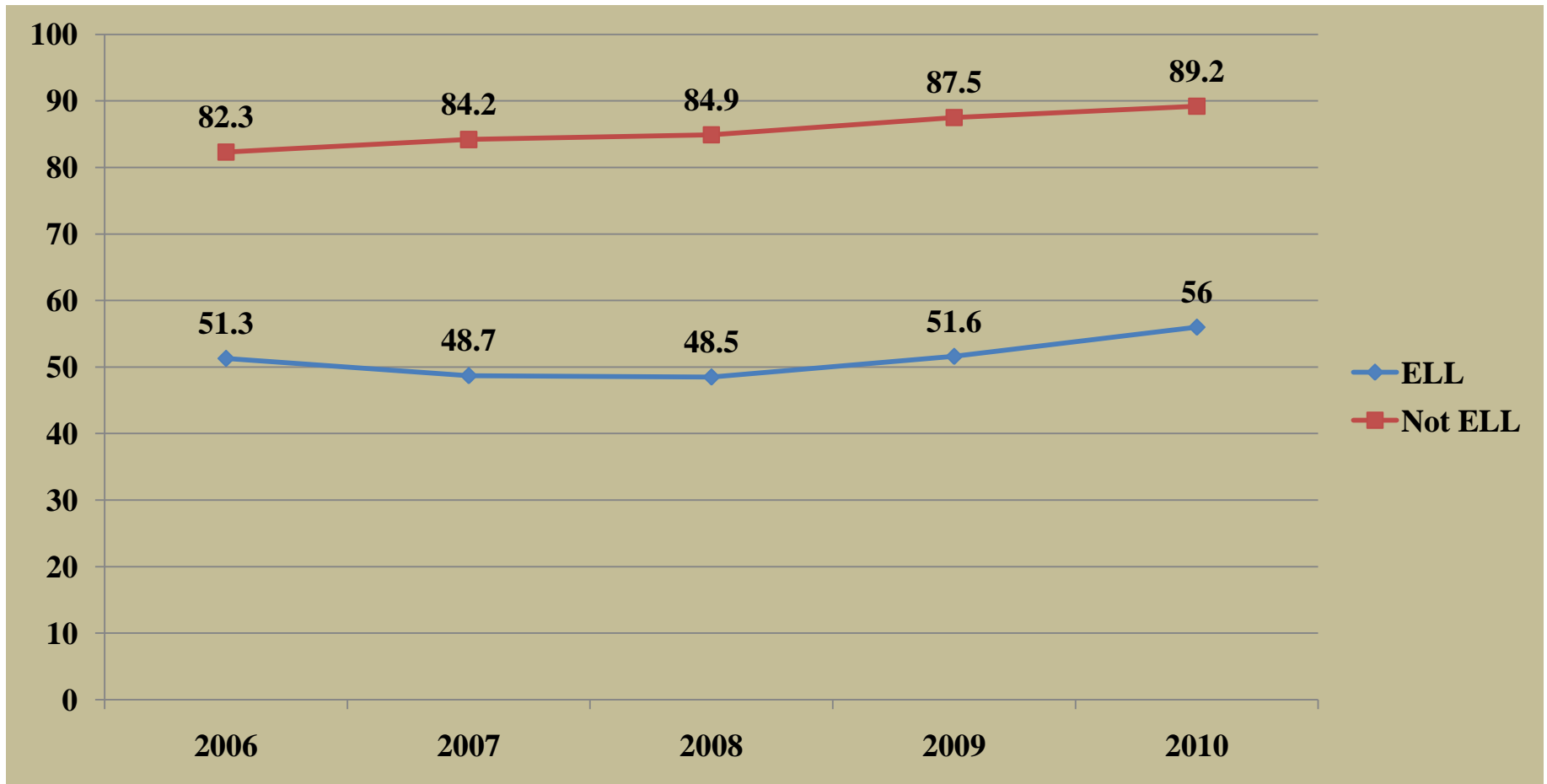


CMT/CAPT Modified Assessment System Percent At or Above Proficient (2010)

GRADE	MATHEMATICS	READING
5	70.3	66.2
8	40.1	64.1
10	37.2	60.4

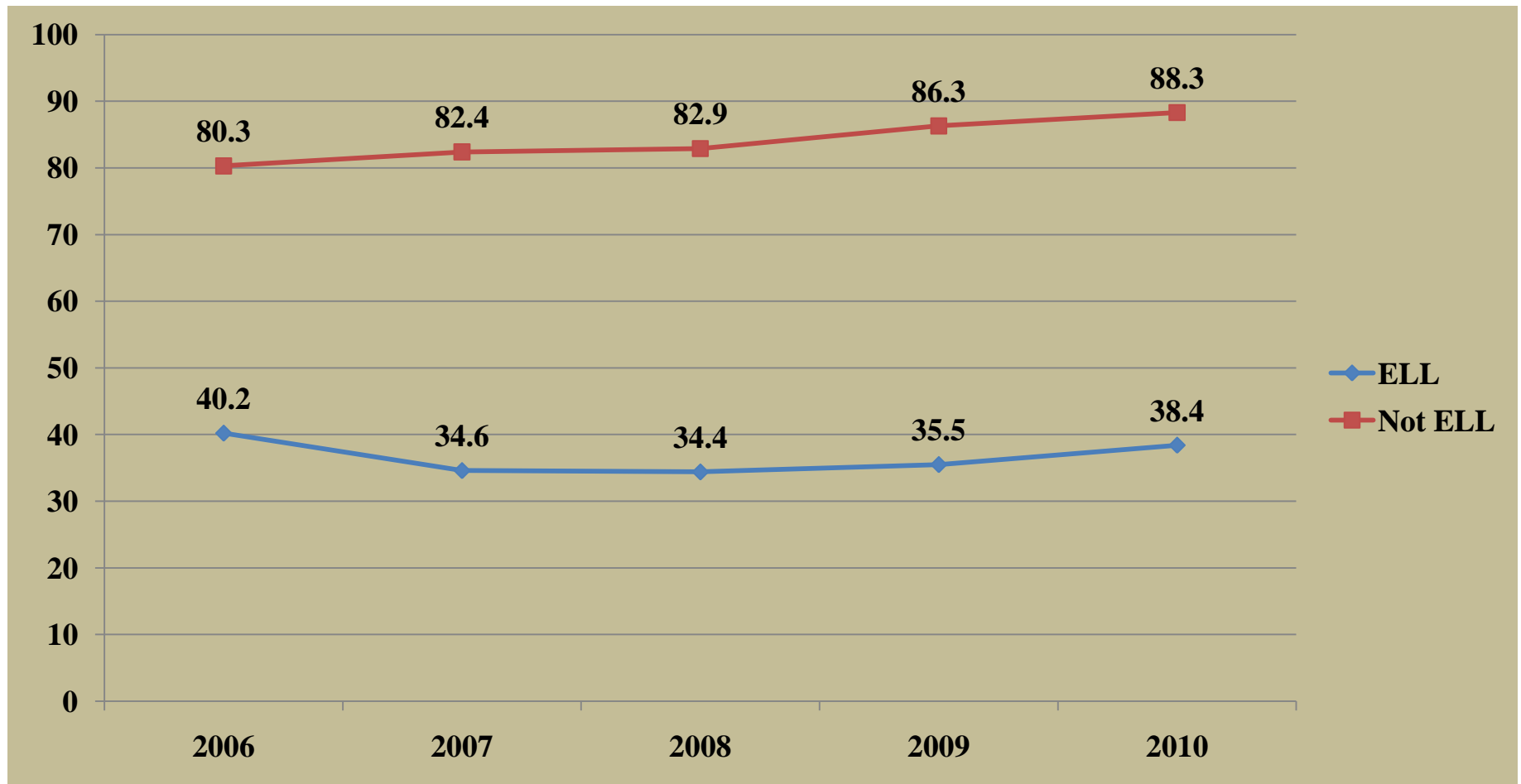
Connecticut SDE

CMT Mathematics: Grade 5 English Language Learners Percent At or Above Proficient
*does not include ELL exempt

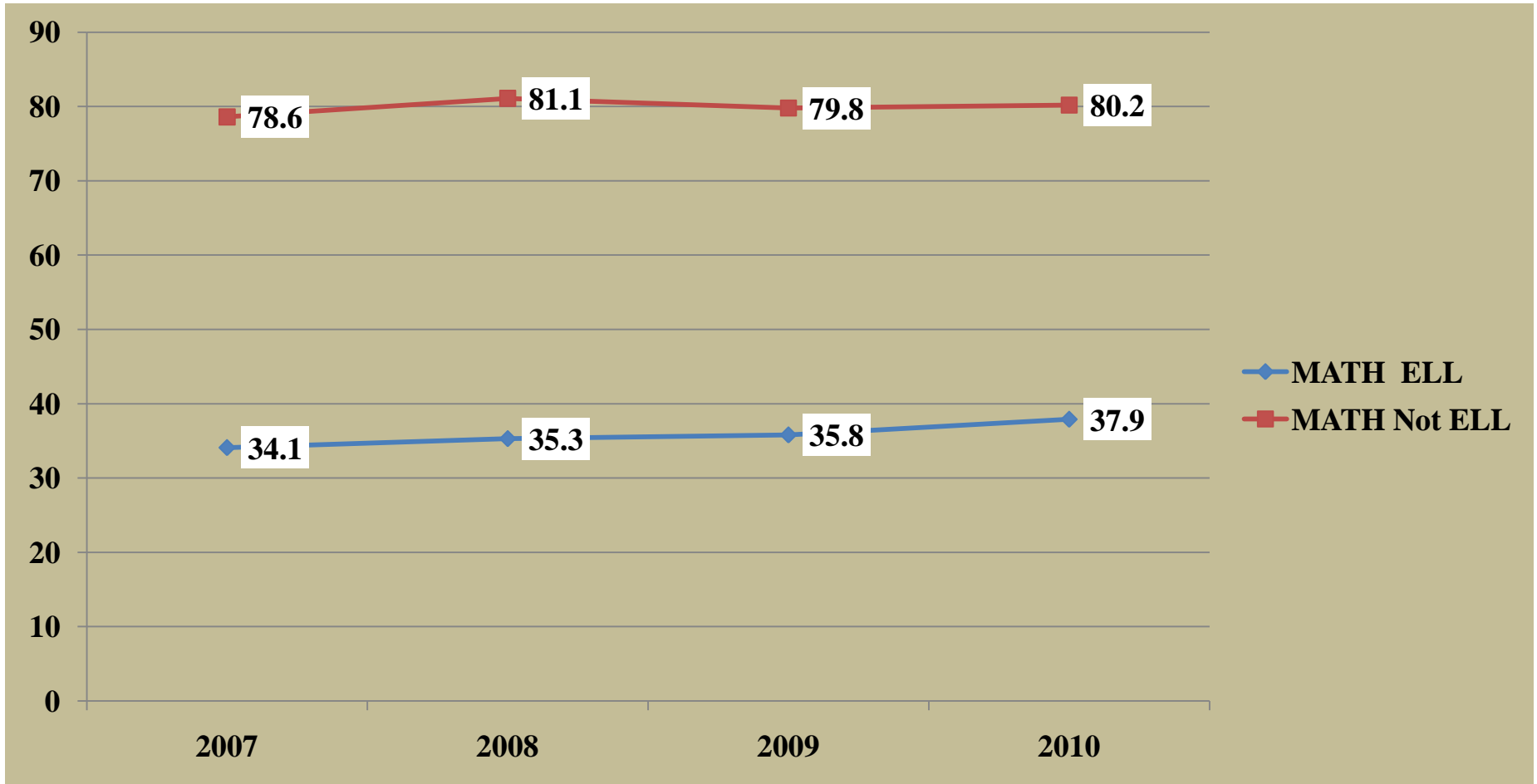


Connecticut SDE

CMT Mathematics: Grade 8 English Language Learners Percent At or Above Proficient
*does not include ELL exempt

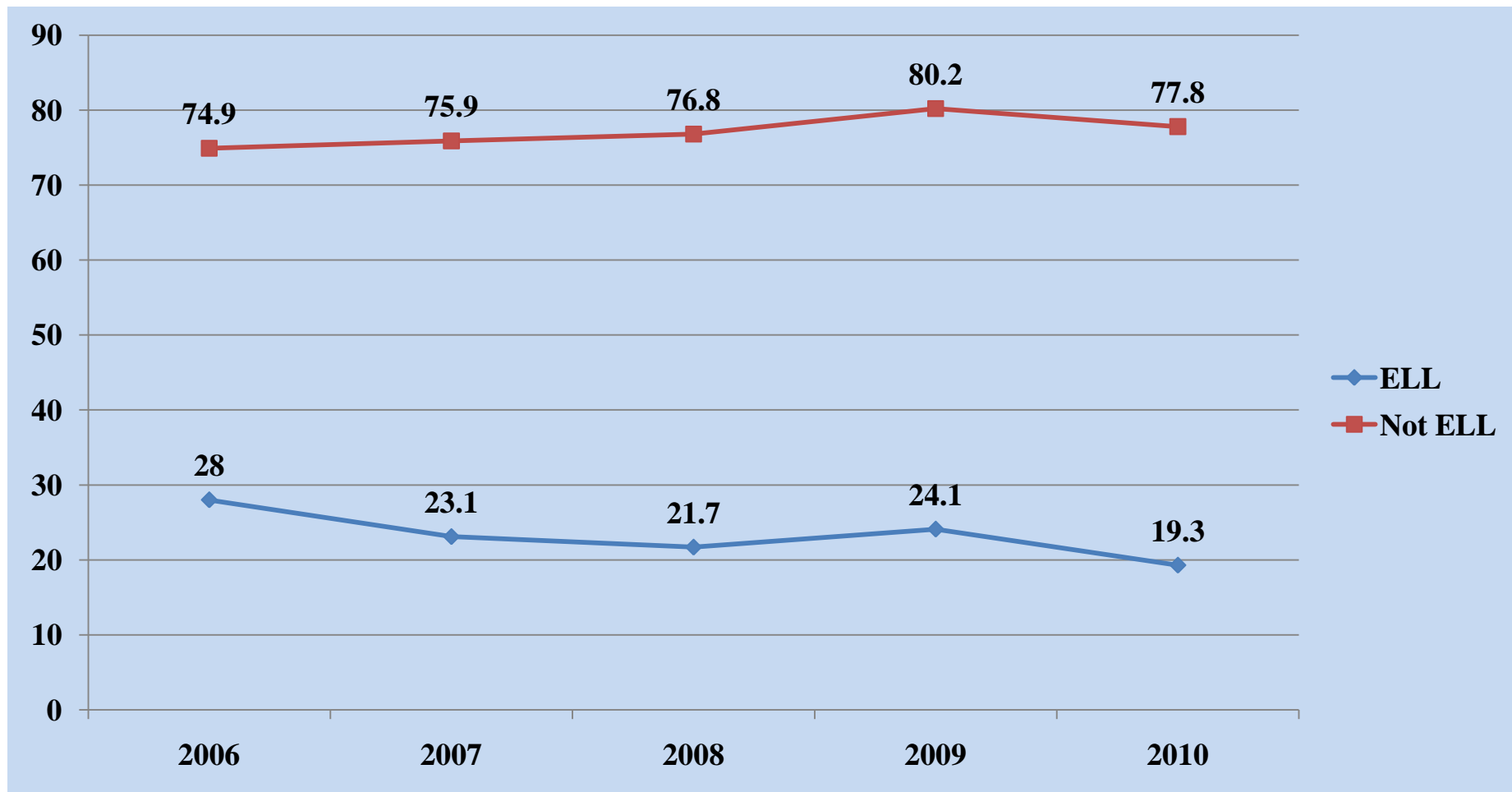


CAPT Mathematics: Grade 10 English Language Learners Percent At or Above Proficient *does not include ELL exempt



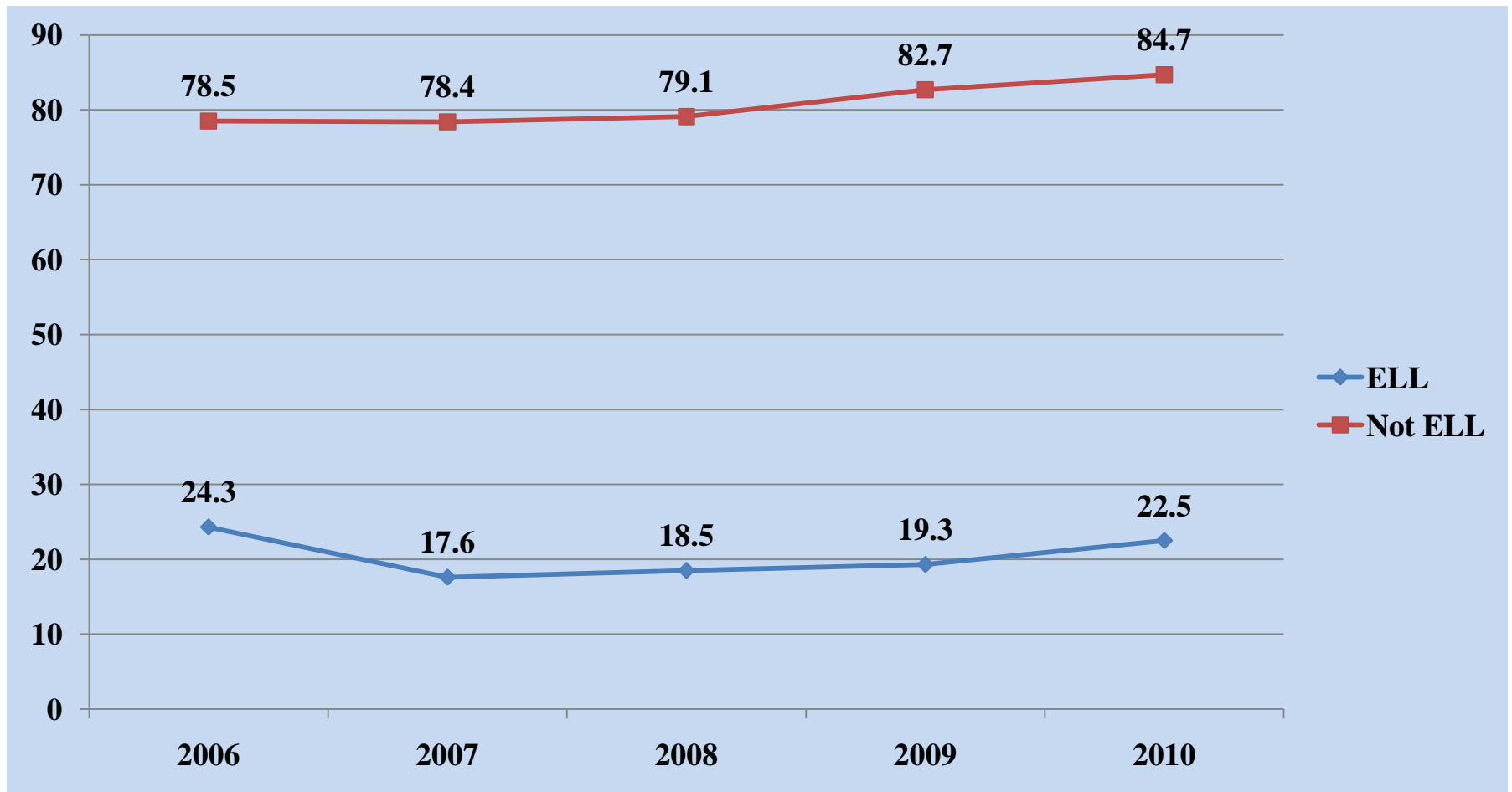
Connecticut SDE

CMT Reading: Grade 5 English Language Learners Percent At or Above Proficient
* does not include ELL exempt



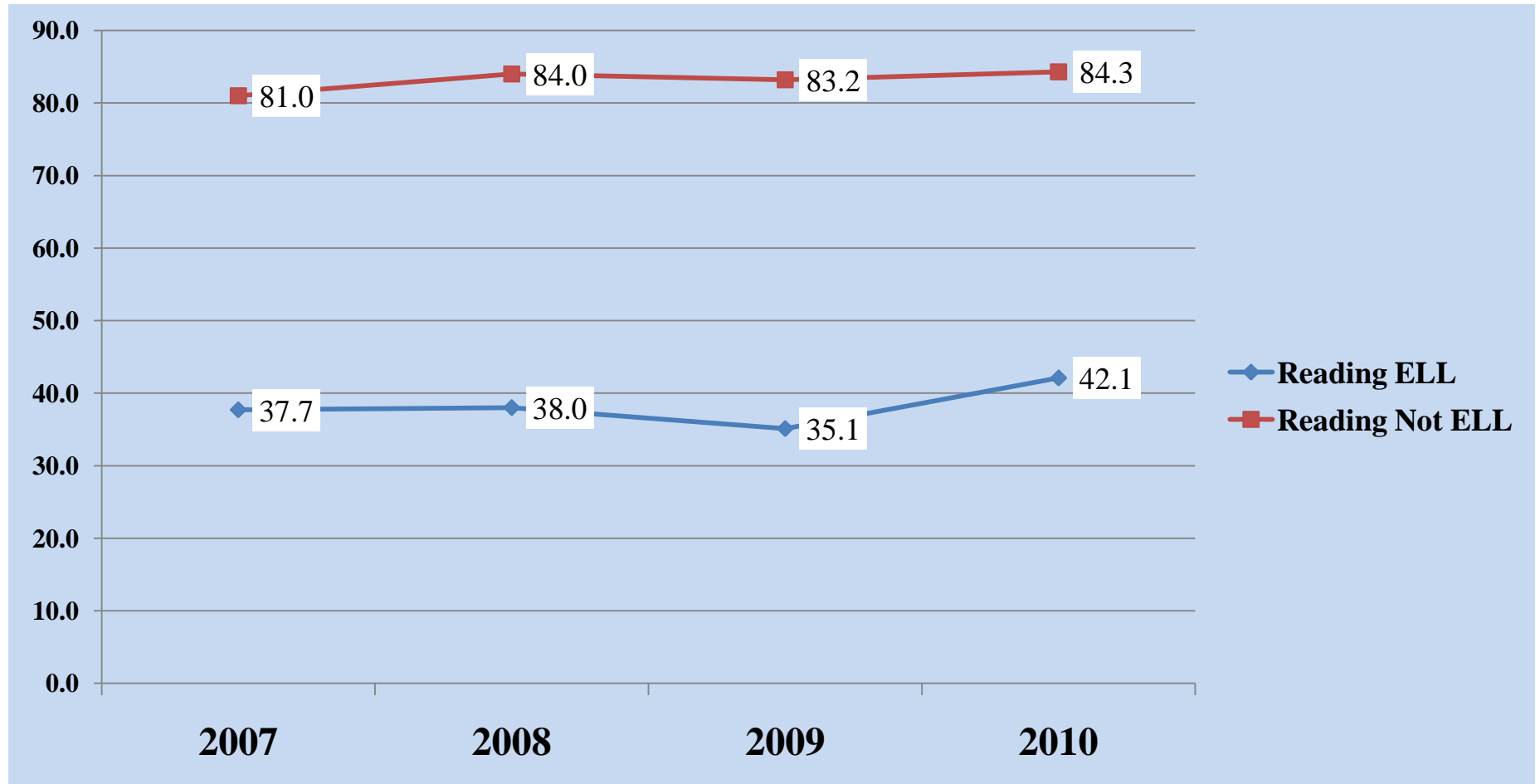
Connecticut SDE

CMT Reading: Grade 8 English Language Learners Percent At or Above Proficient
* does not include ELL exempt



Connecticut SDE

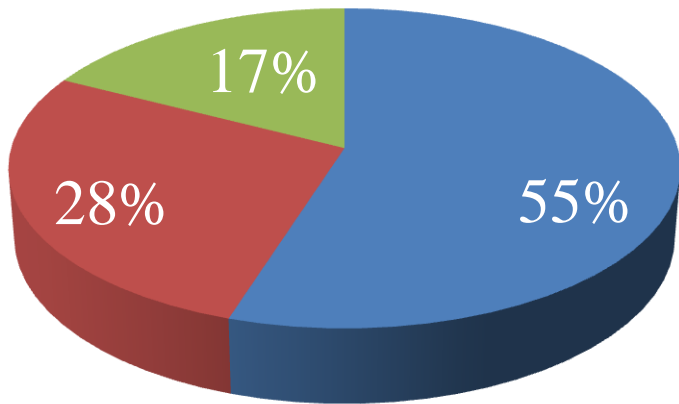
CAPT READING: Grade 10 English Language Learners Percent At or Above Proficient
* does not include ELL exempt



Grade 5 CMT Skills Checklist

Grade 5 Skills Checklist Mathematics

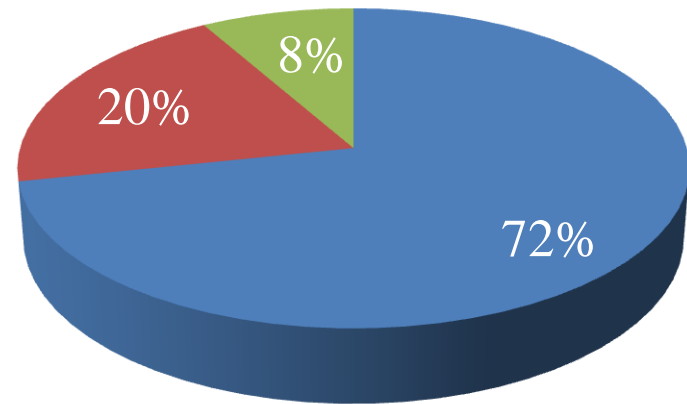
■ Basic % ■ Proficient % ■ Independent %



45% at or above Proficient

Grade 5 Skills Checklist Reading

■ Basic % ■ Proficient % ■ Independent %

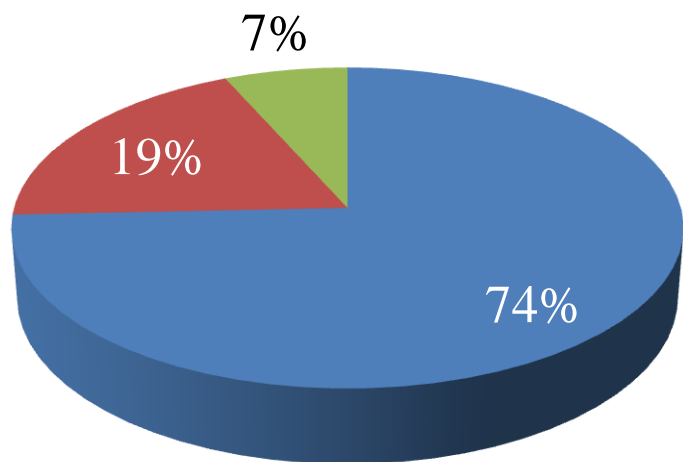


28% at or above Proficient

Grade 8 CMT Skills Checklist

Grade 8 Skills Checklist Mathematics

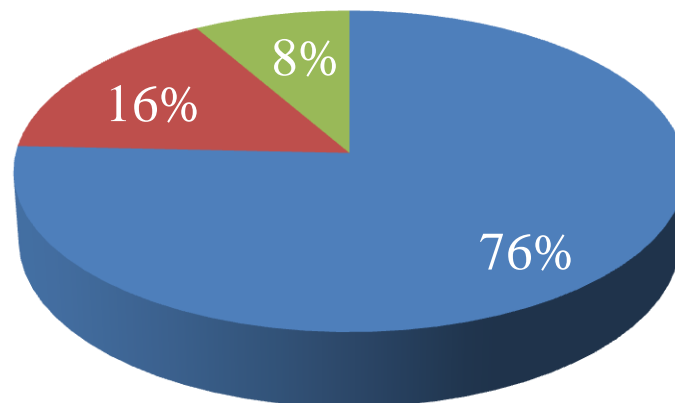
■ Basic % ■ Proficient % ■ Independent %



26% at or above Proficient

Grade 8 Skills Checklist Reading

■ Basic % ■ Proficient % ■ Independent %

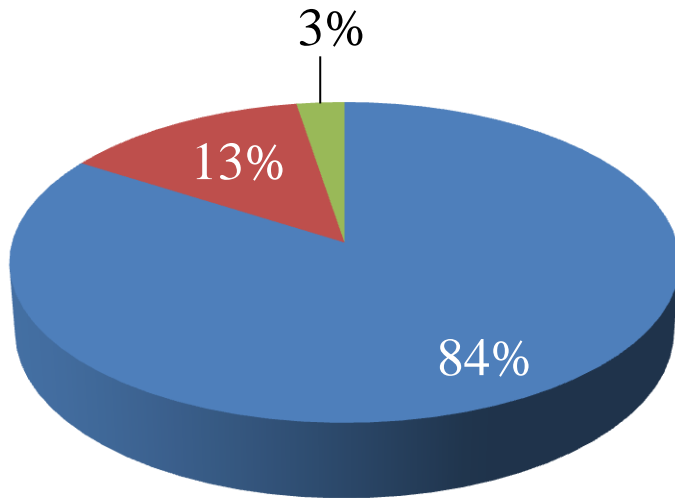


24% at or above Proficient

Grade 10 CAPT Skills Checklist

Grade 10 Skills Checklist Mathematics

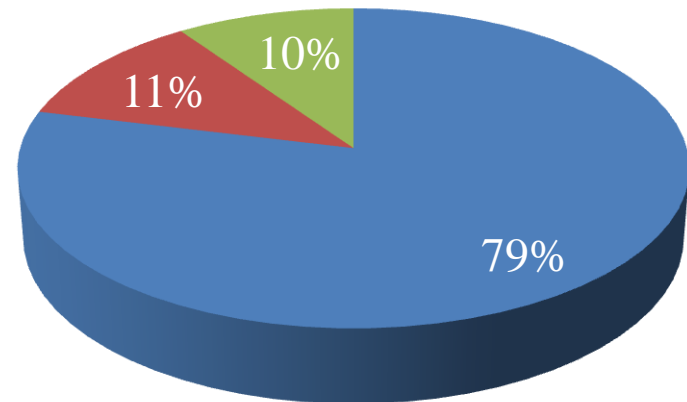
■ Basic % ■ Proficient % ■ Independent %



16% at or above
Proficient

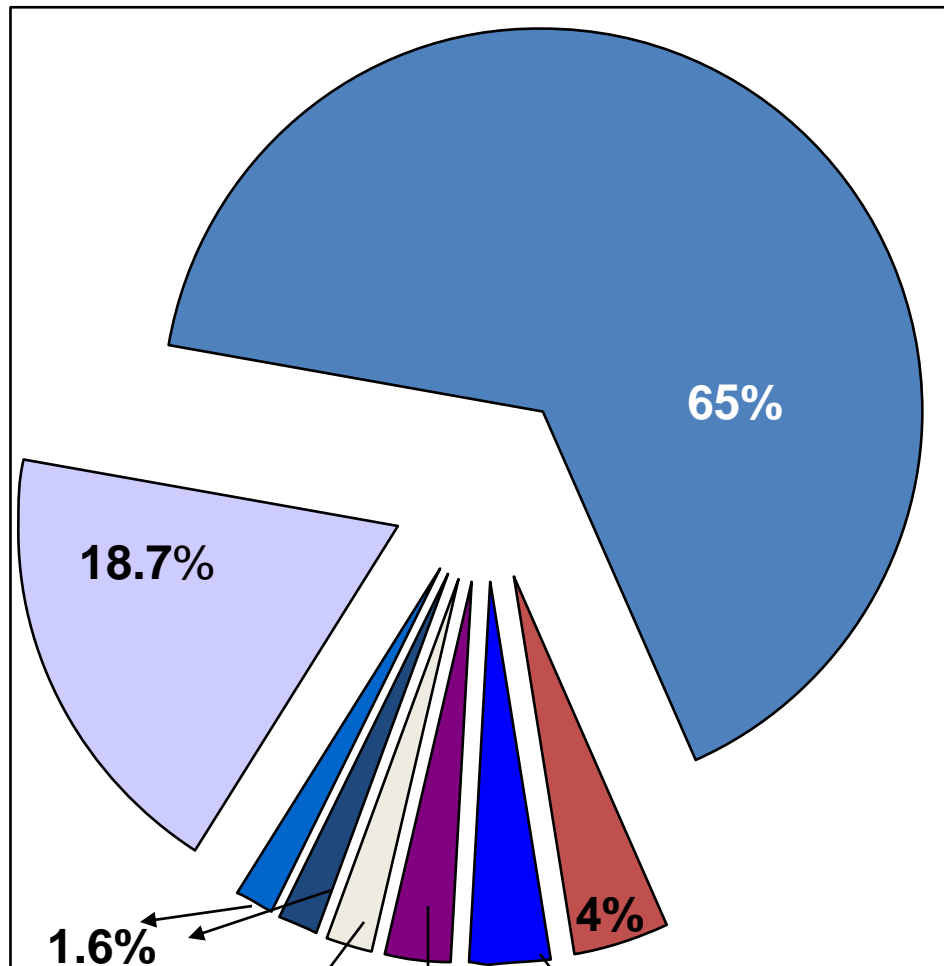
Grade 10 Skills Checklist Reading

■ Basic % ■ Proficient % ■ Independent %



21% at or above
Proficient

Non English Languages Spoken by Connecticut Students



Accommodations Defined

- Accommodations are practices and procedures in the areas of presentation, response, setting, and timing/scheduling that provide equitable instructional and assessment access for all eligible students.
- Accommodations reduce or eliminate the effects of a student's disability and do not reduce learning expectations.

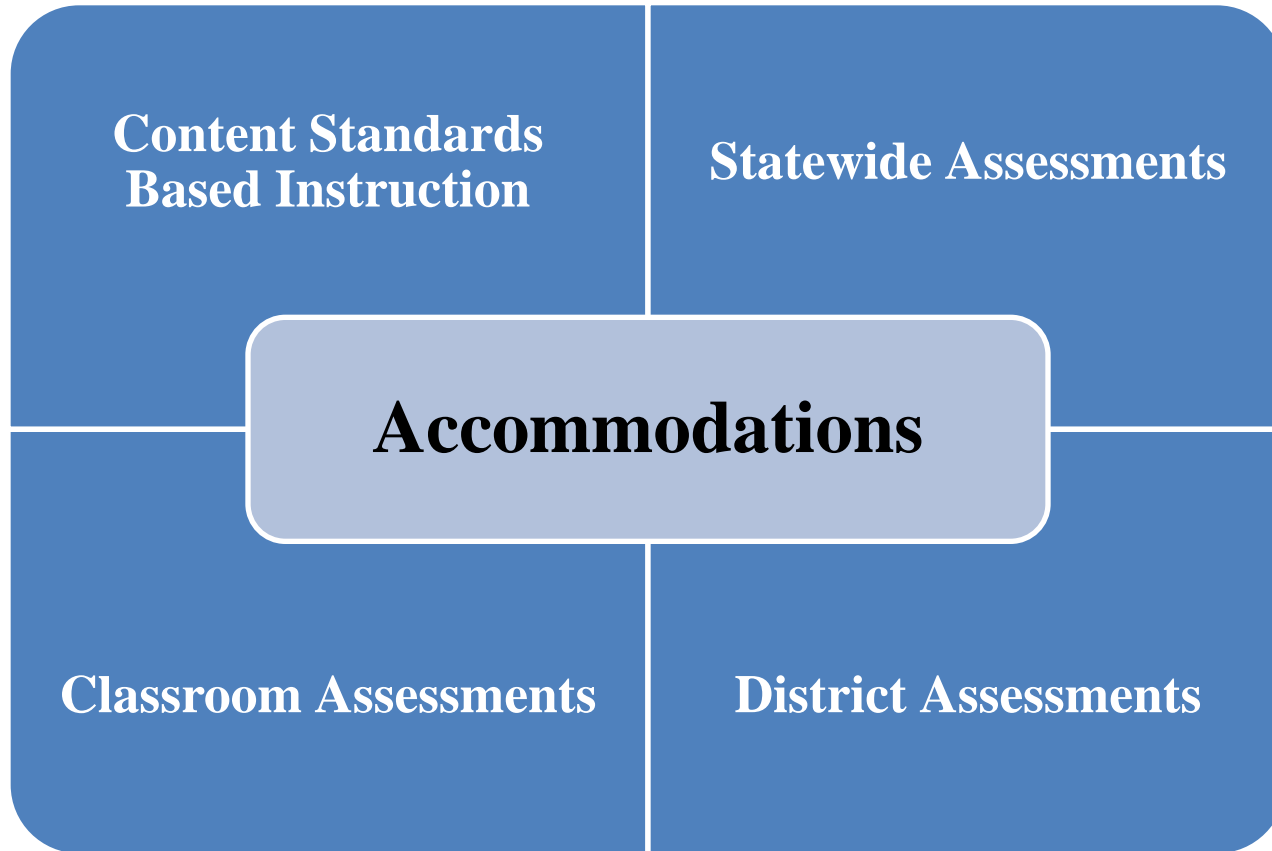
ACCOMMODATIONS vs. MODIFICATIONS

MODIFICATIONS

- Changing, lowering, or reducing learning or assessment expectations

- May result in implications that could adversely affect a student throughout that individual's educational career

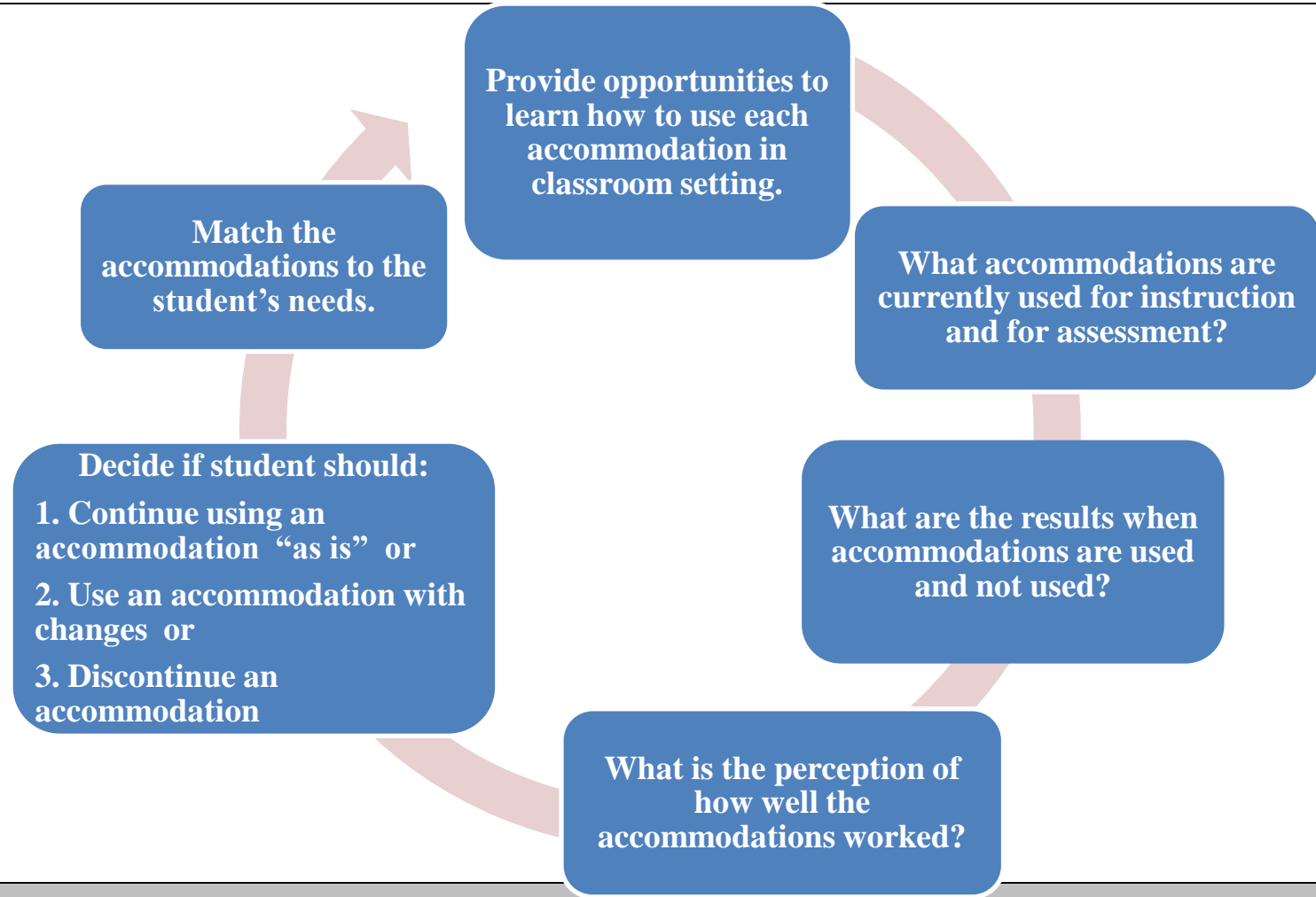
Accommodations Applications



5 Important Steps For An Effective Accommodations Plan

1. Expect all students to achieve grade level academic content standards
2. Learn about accommodations for instruction and assessment
3. Select accommodations for individual students
4. Administer accommodations during instruction and assessment
5. Evaluate and improve accommodation use

Accommodations Cycle



Accommodations Categories

- **Presentation Accommodations**

Allow students to access information in an alternate mode that do not require them to visually read standard print. These include auditory, multi-sensory, tactile, and visual.

- **Response Accommodations**

Allow students to complete assignments, tests, and activities in different ways or to solve or organize problems using some type of assistive device or organizer. These include Braille, word processor, and voice recognition.

Accommodations Categories

- **Setting Accommodations**

Change the location in which a test or assignment is given or the conditions of the assessment setting.

- **Timing/Scheduling Accommodations**

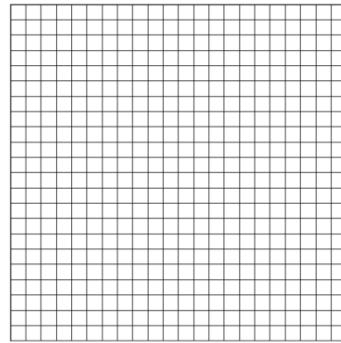
Increase the allowable length of time to complete a test or assignment and may also change the way the time is organized.

Allowable Supports

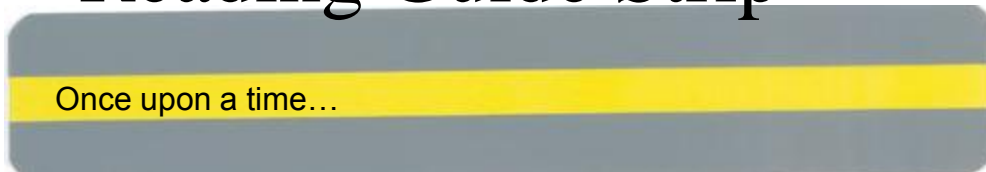
- Highlighter



- Graph Paper



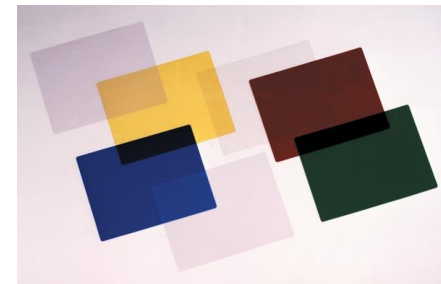
- Reading Guide Strip



- Magnification Sheet



- Color Overlay



Computer Based Testing

- As many as 96% of K-12 **students use computers to some degree for academic or personal purposes** (U.S. Department of Commerce, 2002; DeBell & Chapman, 2006).
- More than 90% of **college graduates use computers at work** (Bureau of Labor Statistics, 2005).
- Increase in **computer availability**.
- **Use of computers to write** has become nearly universal. (Solomon, Lutkus, Kaplan, and Skolnick, 2004).
- Improved **student motivation**. (Solomon et al., 2004).
- Computers are increasingly becoming the mode for completing academic and professional tasks, **computer-based testing is increasingly becoming the mode for large-scale assessments**.
- In 2007, nineteen states were using, piloting, or developing writing assessments that use computers. **Forty-seven states have separate standards for technology use**; the remaining states have embedded technology expectations in content area standards (ACT Research Brief, 2006; Russell & O'Connor, 2003).

Measurement Incorporated Secure Testing (MIST)

1. Access to a computer with an internet connection.

2. MIST application installed.

3. Students who are pre-identified for this accommodation on the CAPT/CMT Accommodations Data Collection Web site will be listed on the MIST roster. New students may be added at the time of testing.



CMT/CAPT Accommodations Provided by the MIST Application

Test	CMT				CMT MAS			
	Online Computer Response	Text Reader (Directions Only)	Text Reader (Test Items)	Requires submission on MIST	Online Computer Response	Text Reader (Directions Only)	Text Reader (Test Items)	Requires submission on MIST
Mathematics (MA)	No	No	No	No	No	Yes*	Yes*	No
Degrees of Reading Power® (DRP®)	Yes	Yes		Yes	Yes	Yes		Yes
Reading Comprehension (RC)	Yes	Yes		Yes	Yes	Yes		Yes
Direct Assessment of Writing (DAW)	Yes	Yes	Yes*	Yes				
Editing & Revising (ER)	Yes	Yes	Yes*	Yes				
Science (SC)	Yes	Yes	Yes*	Yes				
Supplemental	No	No	No	No				

*New for 2011

Test	CAPT				CAPT MAS			
	Online Computer Response	Text Reader (Directions Only)	Text Reader (Test Items)	Requires submission on MIST	Online Computer Response	Text Reader (Directions Only)	Text Reader (Test Items)	Requires submission on MIST
Mathematics (MA)	No	Yes*	Yes*	No	No	Yes*	Yes*	No
Response to Literature (RL)	Yes	Yes		Yes	Yes	Yes		Yes
Reading for Information (RI)	Yes	Yes		Yes	Yes	Yes		Yes
Interdisciplinary Writing (IW)	Yes	Yes	Yes*	Yes				
Editing & Revising (ER)	Yes	Yes	Yes*	Yes				
Science (SC)	No	Yes*	Yes*	No				
Supplemental	No	No	No	No				

*New for 2011

ELL CMT Reader Accommodation Delivery

Subject	Text Reader (Directions Only) In English*	Text Reader (Test Items) In English	Requires submission on MIST	CMT Administration
Mathematics (MA)	No	No	No	Non-certified/Cert. staff for directions/ Certified staff for test items in groups of 5 or less responding in test booklet
Degree of Reading Power (DRP)	Yes		Yes	MIST Text Reader for Directions only/MIST
Reading Comprehension (RC)	Yes		Yes	MIST Text Reader for Directions only/MIST
Direct Assessment of Writing (DAW)	Yes	Yes	Yes	MIST Text Reader for Directions and Test Items/MIST**
Editing & Revising (ER)	Yes	Yes	Yes	MIST Text Reader for Directions and Test Items/MIST
Science (SC)	Yes	Yes	Yes	MIST Text Reader for Directions and Test Items/MIST
Supplemental	No	No	No	Non-certified/Cert. staff for directions/ Certified staff for test items in groups of 5 or less responding in test booklet

*If student requires **Reader of Directions Accommodation** in Native Language **ONLY** they will not respond via MIST

** Response for DAW may be in test booklet for students with very limited computer experience

ELL CAPT Reader Accommodation Delivery

Subject	Text Reader (Directions Only) In English*	Text Reader (Test Items) In English	Requires submission on MIST	CAPT Administration
Mathematics (MA)	Yes	Yes	No	MIST Text Reader for Directions and Test Items less/test booklet
Response to Literature (RL)	Yes		Yes	MIST Text Reader for Directions only/MIST
Reading for Information (RI)	Yes		Yes	MIST Text Reader for Directions only/MIST
Interdisciplinary Writing (IW)	Yes	Yes	Yes	MIST Text Reader for Directions and Test Items/MIST
Editing & Revising (ER)	Yes	Yes	Yes	MIST Text Reader for Directions and Test Items/MIST
Science (SC)	Yes	Yes	No	MIST Text Reader for Directions and Test Items/test booklet
Supplemental	No	No	No	Non-certified/Cert. staff for directions/ Certified staff for test items in groups of 5 or less responding in test booklet

*If student requires *Reader of Directions Accommodation* in Native Language **ONLY** they will not respond via MIST

ELL Accommodations for Writing

- Writing score includes both
 - Editing and Revising (ER) and
 - Direct Assessment of Writing (DAW)

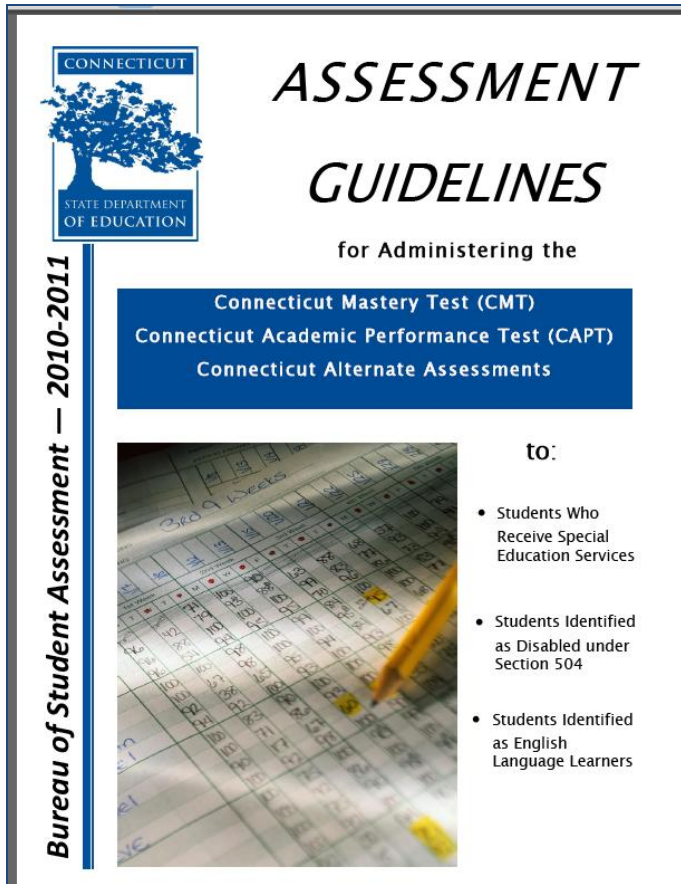
Accommodation	DAW Response	ER Response
Reader of Directions Only (Native Language) Does not include reading prompt in native language	Test booklet	Test Booklet
Reader of Directions Only (ENGLISH)	MIST	MIST
Reader of Test Items	MIST or Test Booklet	MIST

CSDE Web Site and Bilingual-ESL Web Page

www.sde.ct.gov

- Click “more” at the bottom right of page
- Choose “accountability and improvement”
- Click “Bilingual-ESL” on top right

Accommodation Resources



CONNECTICUT
STATE DEPARTMENT
OF EDUCATION

ASSESSMENT GUIDELINES

for Administering the

Connecticut Mastery Test (CMT)
Connecticut Academic Performance Test (CAPT)
Connecticut Alternate Assessments

Bureau of Student Assessment — 2010-2011

to:

- Students Who Receive Special Education Services
- Students Identified as Disabled under Section 504
- Students Identified as English Language Learners

CONNECTICUT'S SUPPLEMENTARY GUIDE: USE OF ACCOMMODATIONS FOR INSTRUCTION AND ASSESSMENT

This document is meant to be utilized in conjunction
with the Connecticut Assessment Guidelines

<http://www.csde.state.ct.us/public/cedar/assessment/agl/index.htm>

Connecticut State Department of Education

CAPT/CMT Accommodations Data Collection

<http://solutions.emetric.net/TAForm>

View Report:

- Main Data Counts by District
- Typed Responses by District
- Accommodation Summary Report
- Checklist Summary Report
- Roster Standard
- Roster Checklist
- Roster MAS
- Error List
- Deleted List

* - indicates attention required

Entry Form:

- Accommodations Submission Form
- Accommodations Batch Submission (File Upload)
- MAS Batch Submission (File Upload)

- Control Panel



Connecticut State Department of Education

CAPT/CMT Accommodations Data Collection

Enter SASID for accommodation entry:

Program: CMT

Name:

Grade: 5

School Code:

District of Fiscal Responsibility:

Choose Action:

- Enter CMT Accommodations
- Enter CMT Skills Checklist Learner Characteristics Inventory (LCI)
- Enter CMT (Modified Assessment System MAS) PPT Eligibility Worksheet and ALL accommodations

Note: For students assessed with the Modified Assessment (MAS) in Mathematics and/or Reading, enter accommodations for ALL content areas (MAS and Standard) on the CMT/CAPT MAS Accommodation form on-line.

Contact Information

Janet Stuck

Education Consultant, Special Populations
Bureau of Student Assessment

Connecticut State Department of Education

Phone: 860-713-6837

janet.stuck@ct.gov

