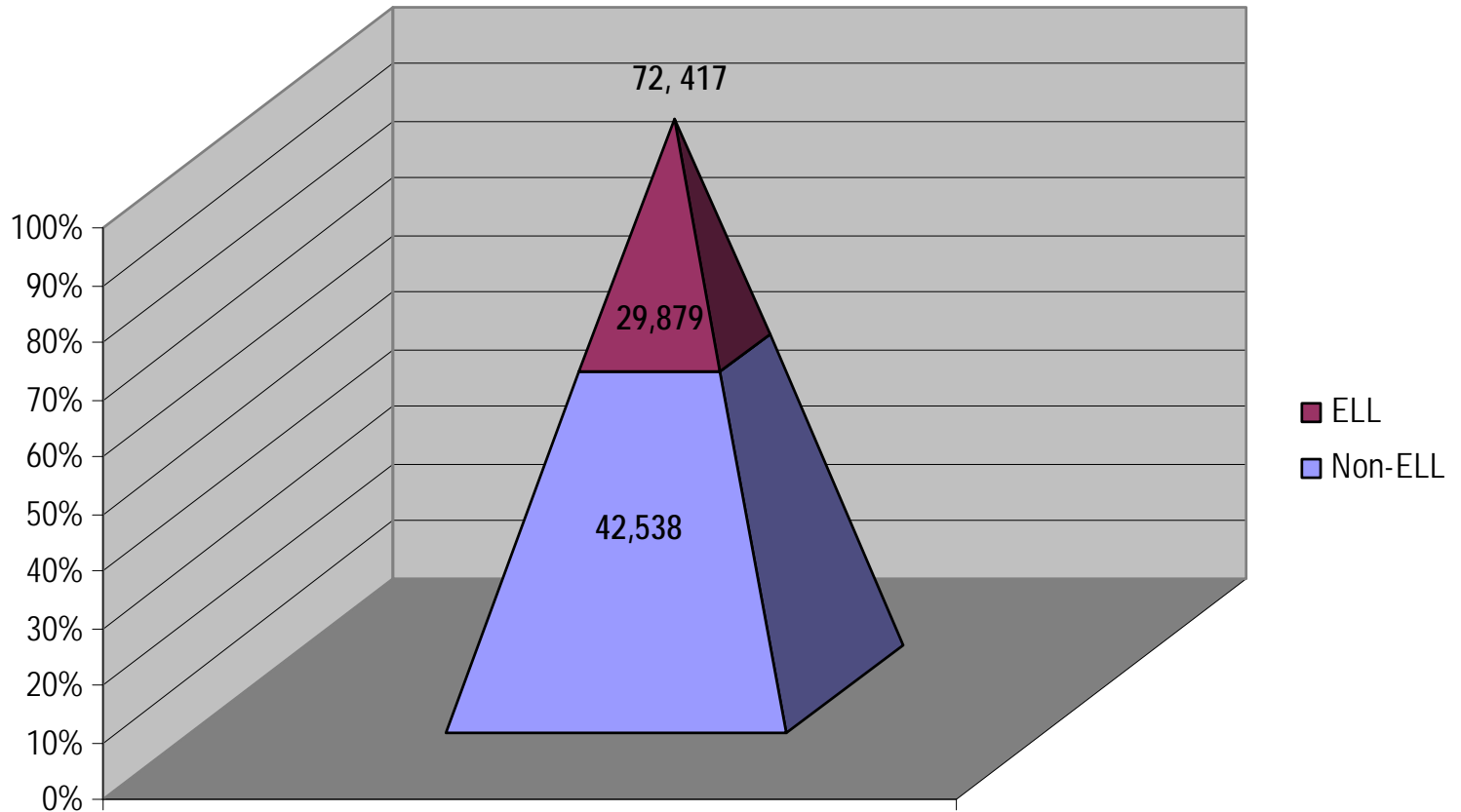


ENGLISH LANGUAGE LEARNERS IN CONNECTICUT, 2003-04 to 2007-08

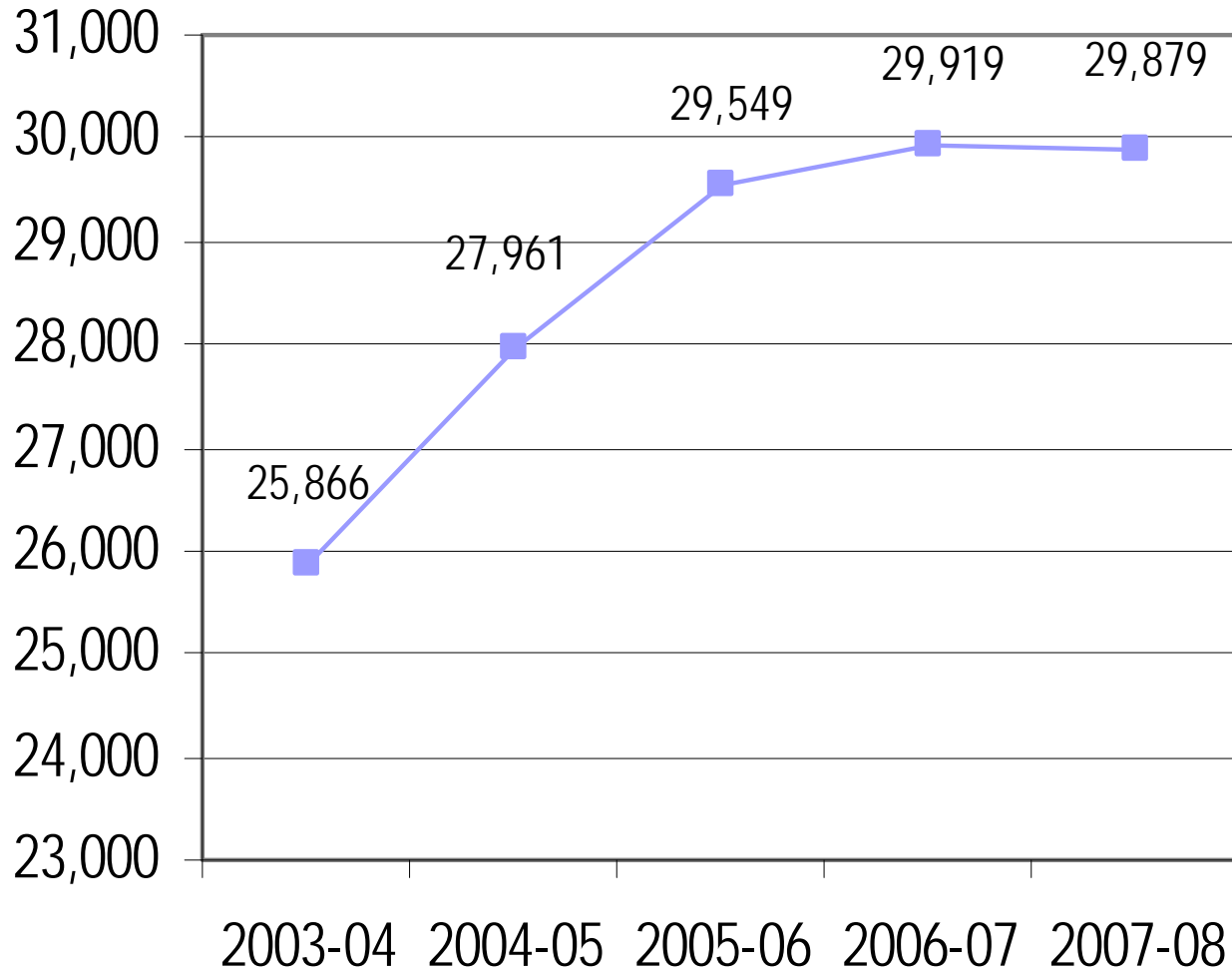
*Presentation to the Connecticut Administrators of
Programs
for English Language Learners (CAPELL)*

*Michael Sabados, Ph.D.
October 10, 2008*

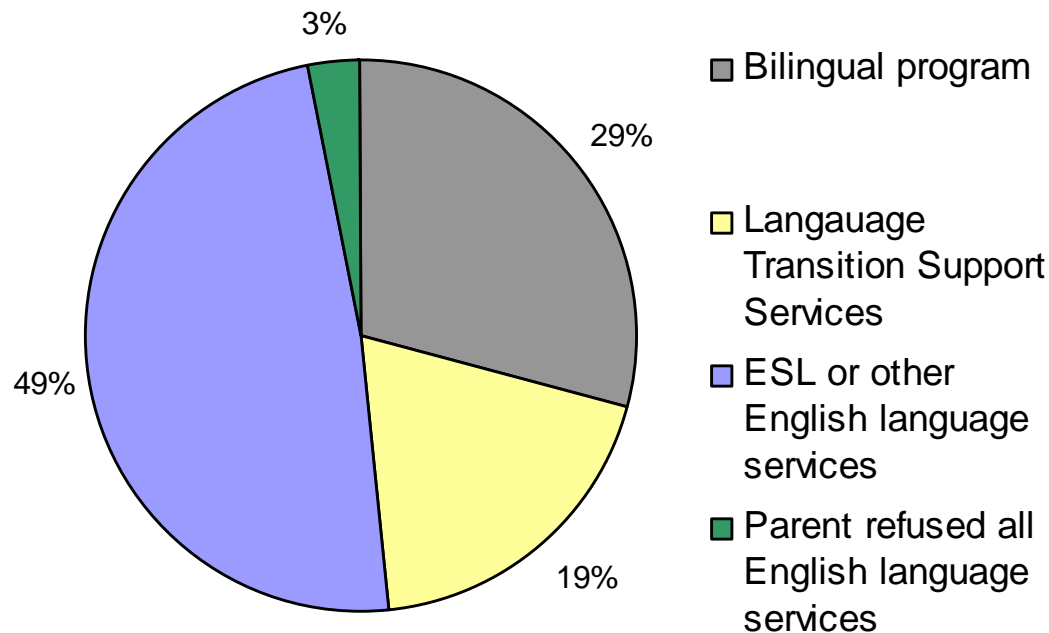
Students With a Dominant Language Other Than English, 2007-08



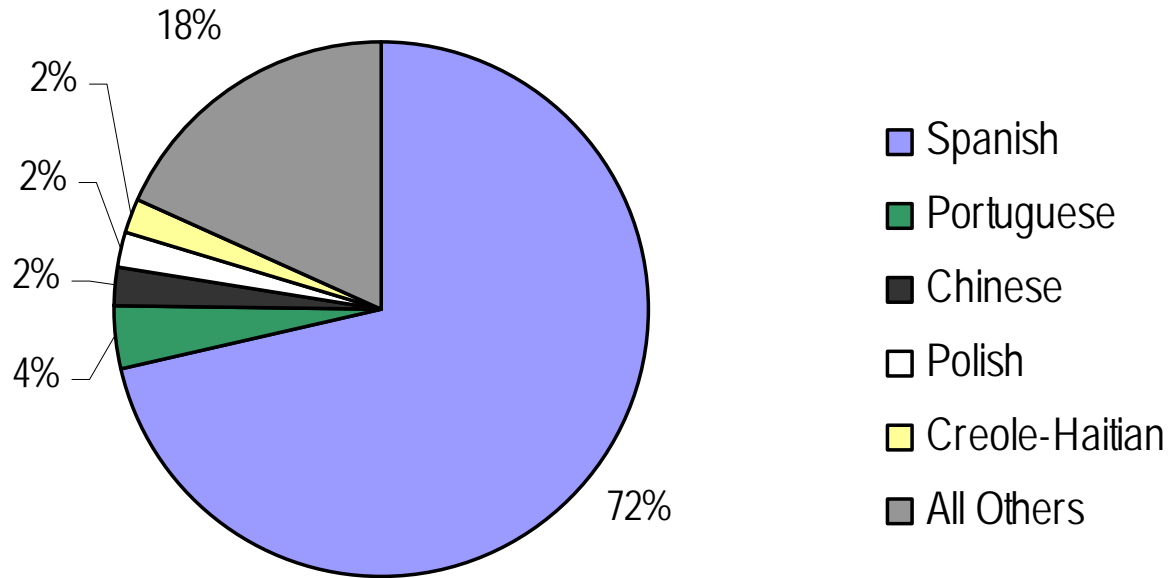
Over the last 5 years, ELL Students Increased by 15.5%, 2003-04 to 2007-08



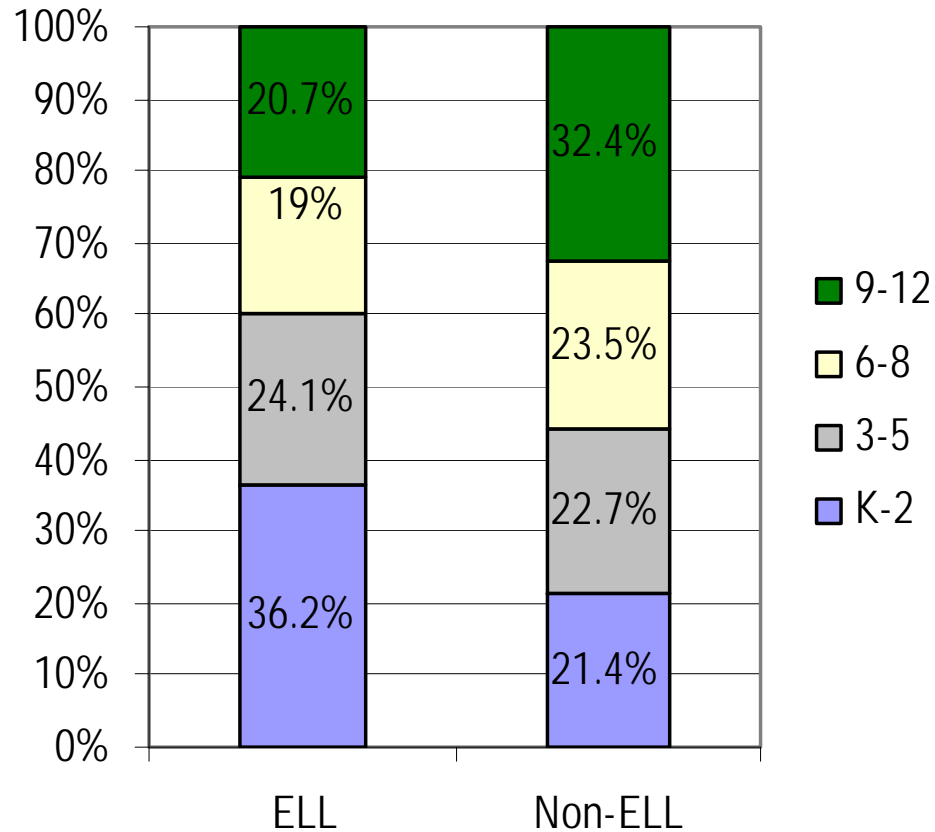
Nearly Half of All ELL Students Received ESL/Other English Language Services, 2007-08



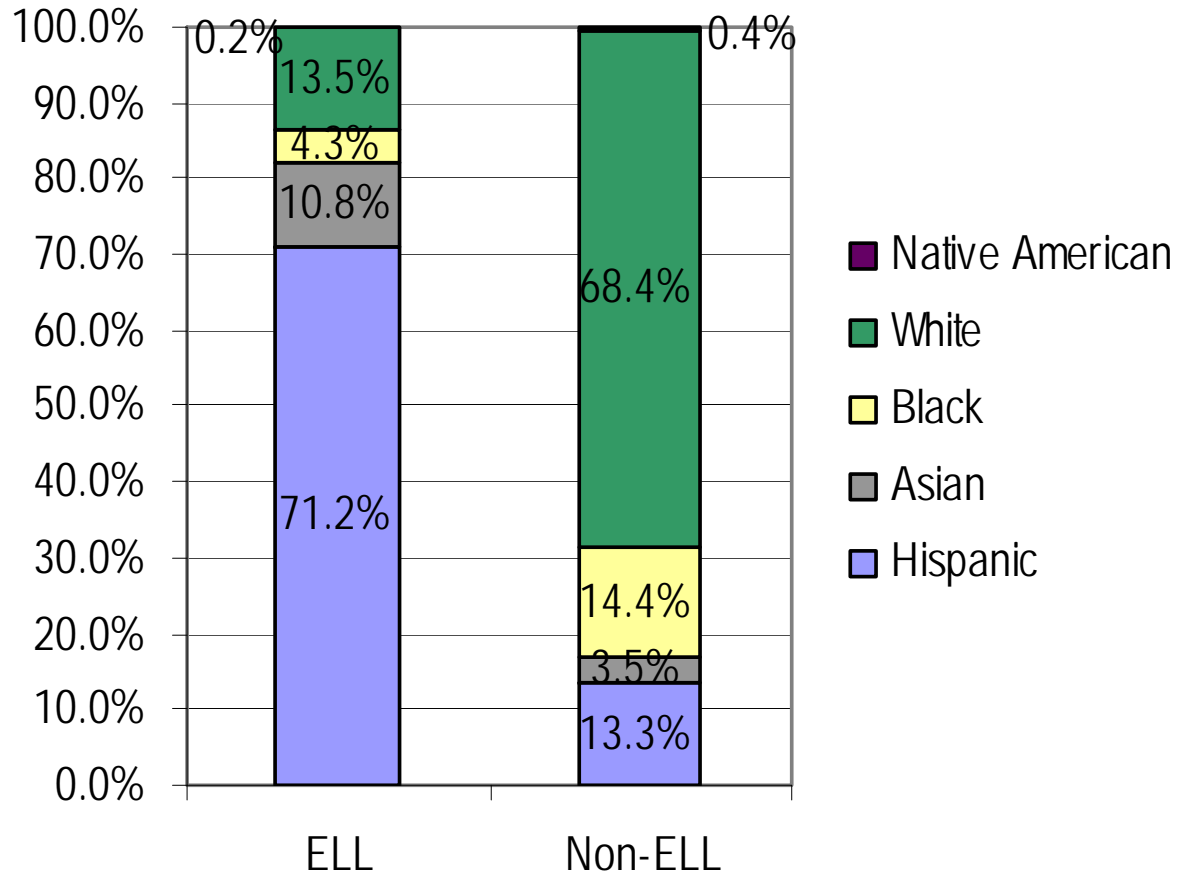
Most ELL Students Were Spanish Speakers, 2007-08



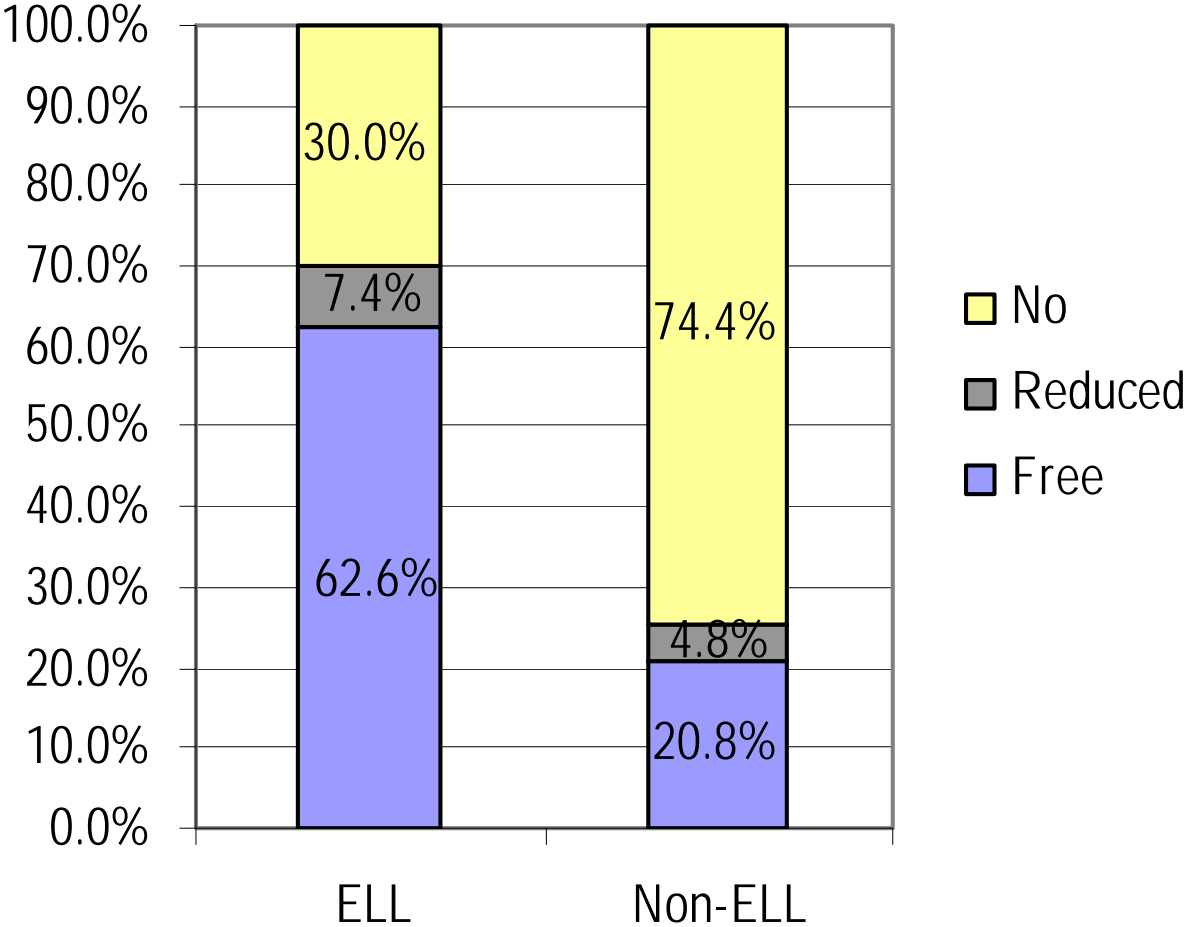
Most ELL Students Were In Elementary School, 2007-08



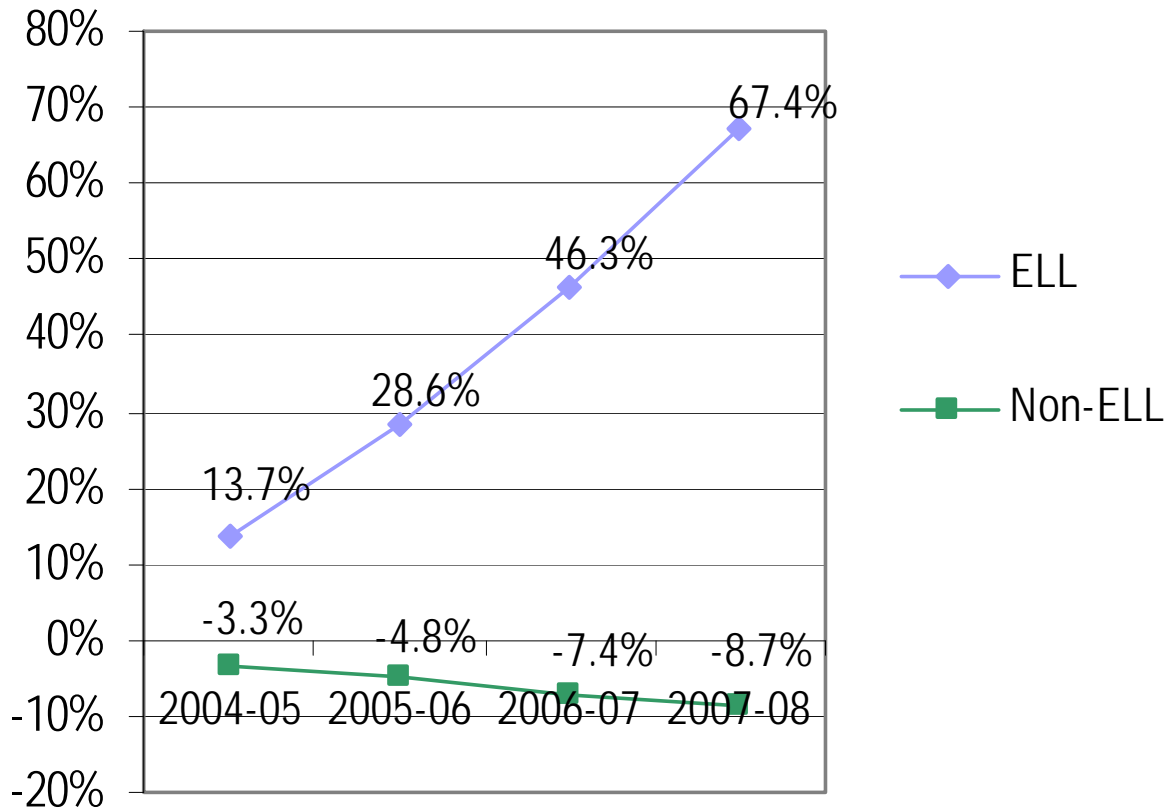
More Than Two-thirds of All ELL Students Were Hispanic, 2007-08



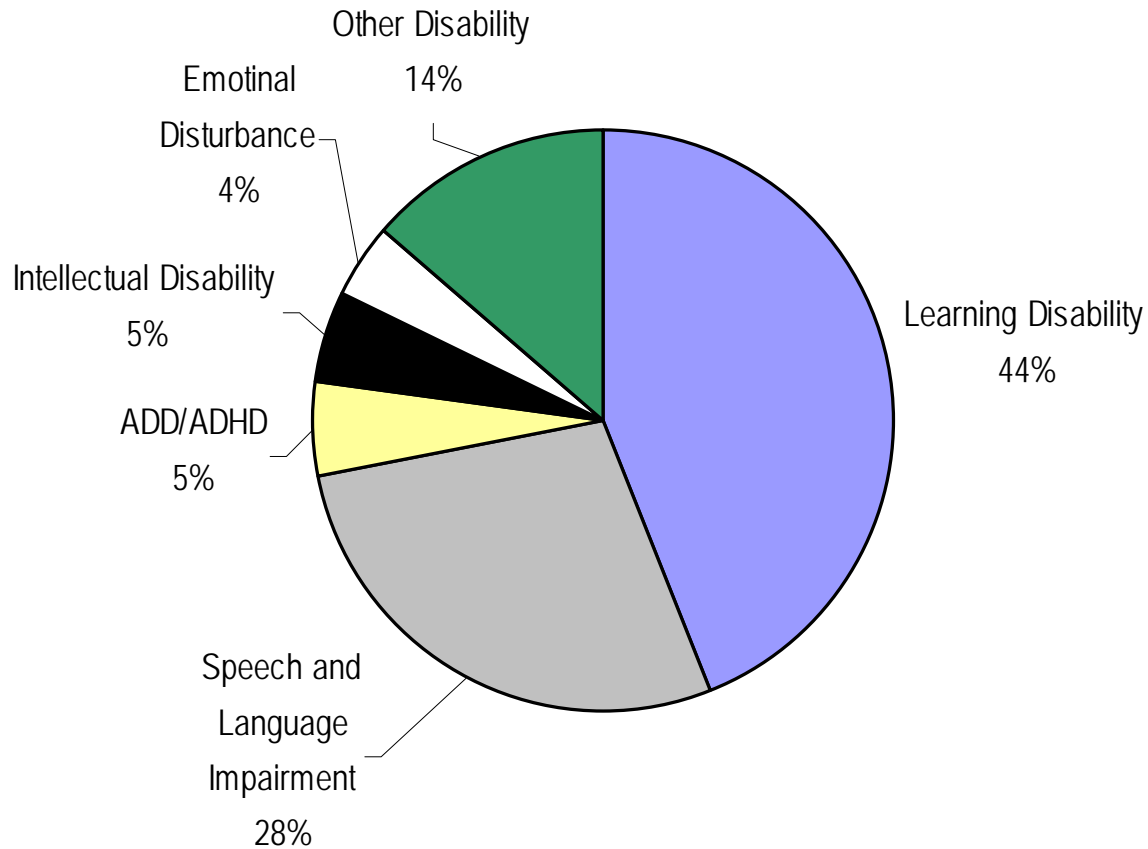
Most ELL Students Were Eligible for Free/Reduced Meals, 2007-08



ELL Students Identified For Special Education Increased by Two-thirds, 2003-04 to 2007-08



Primary Disability of ELL Students Identified for Special Education, 2007 - 2008



Bilingual and TESOL Teacher Issues

- Aging bilingual and TESOL teachers
- Declining number of bilingual teachers
- Unfilled bilingual and TESOL teaching vacancies

Critical ELL Issues

- Increasing ELL Staff
- Monitoring reasons for the increase in ELL students also identified for special education
- Ensuring ELL students can meet increasing academic standards

For Further Information:

Michael Sabados, Ph.D.

(860) 713-6856

Michael.sabados@ct.gov